

Pennsylvania Youth Survey 2015



Pennsylvania Youth Survey (PAYS)

- State sponsored survey of student drug and alcohol behaviors and attitudes, as well as risk and protective factors
- Conducted every two years since at least 2005
- All 6th, 8th, 10th and 12th graders participate
- Participation is voluntary and confidential
- Provides both a comprehensive snapshot and longitudinal view of student behaviors
- Most recent administration November 2015
- Analyzed by LYFT Data Committee

Cause for Celebration

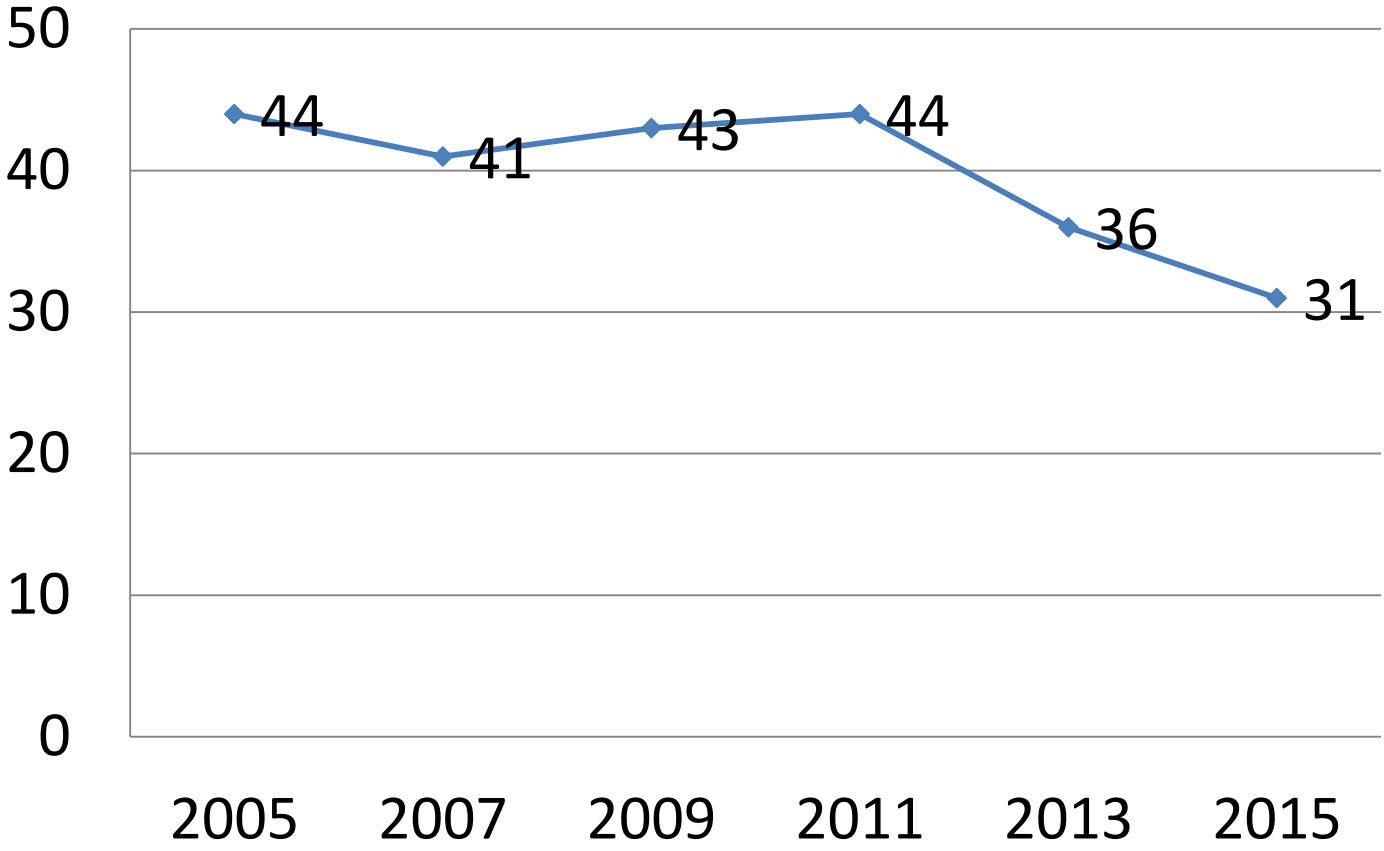
- Risk factors our students face have decreased
- We maintain a high level of protective factors
- Alcohol and Marijuana use have decreased

Risk Factors Have Decreased

- Risk factors are conditions that increase the likelihood of a young person becoming involved in drug use, delinquency, school dropout, and/or violence.
- Examples of risk factors include perceived availability of drugs, family conflict, rebelliousness and low commitment to school.
- In Pennsbury, the total risk factors that students face has decreased significantly since 2005 and are below state averages.

Overall Risk Factors Combined

Risk Factors 2005-2015



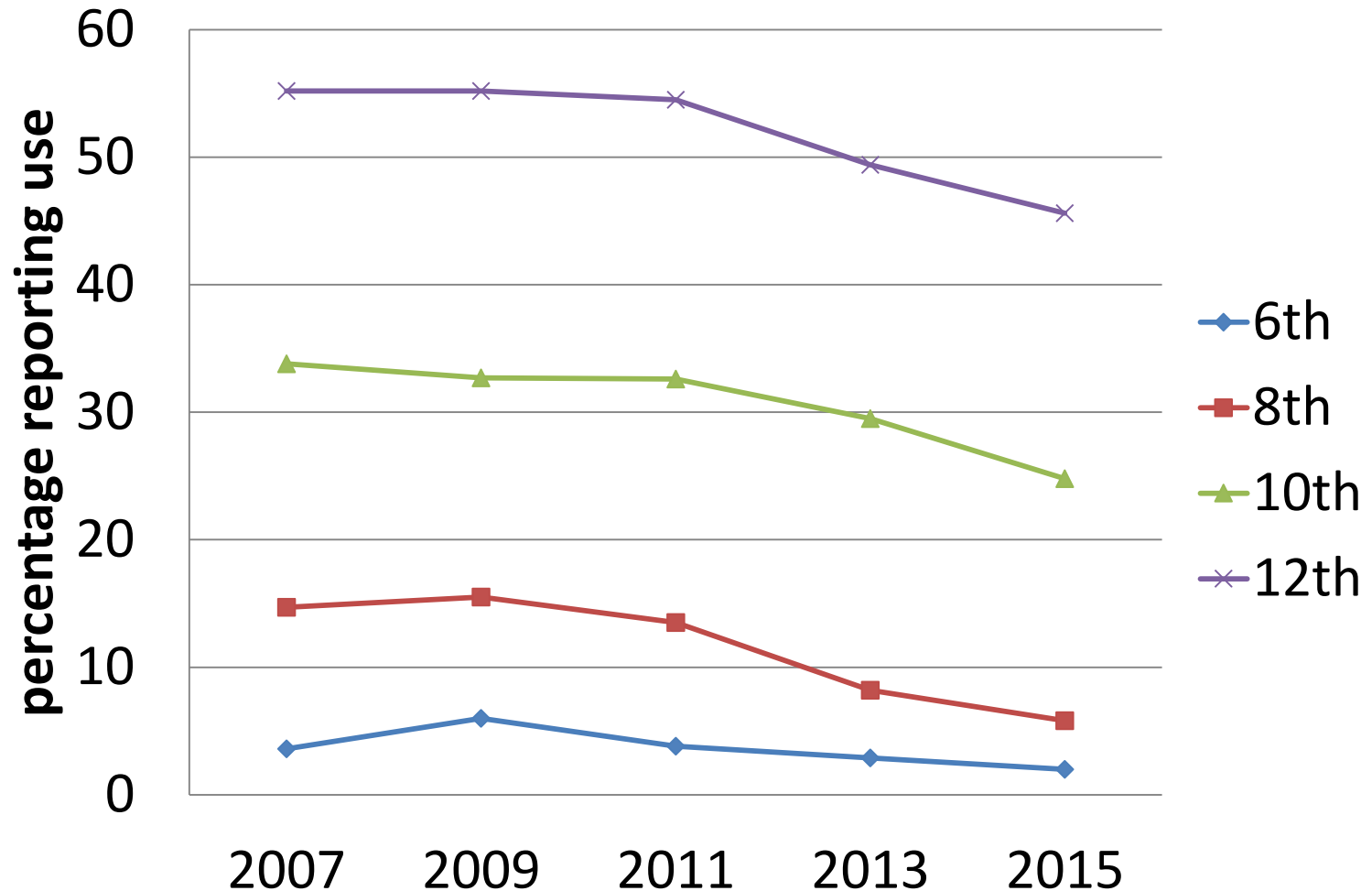
Percentages of students who have three or more risk factors

Past 30-Day use of Alcohol

	2007	2009	2011	2013	2015
6th	3.6	6.0	3.8	2.9	2.0
8th	14.7	15.5	13.5	8.2	5.8
10th	33.8	32.7	32.6	29.5	24.8
12th	55.2	55.2	54.5	49.4	45.6

Percentages of students who report using alcohol at least once in the past 30 days

Past 30-Day use of Alcohol



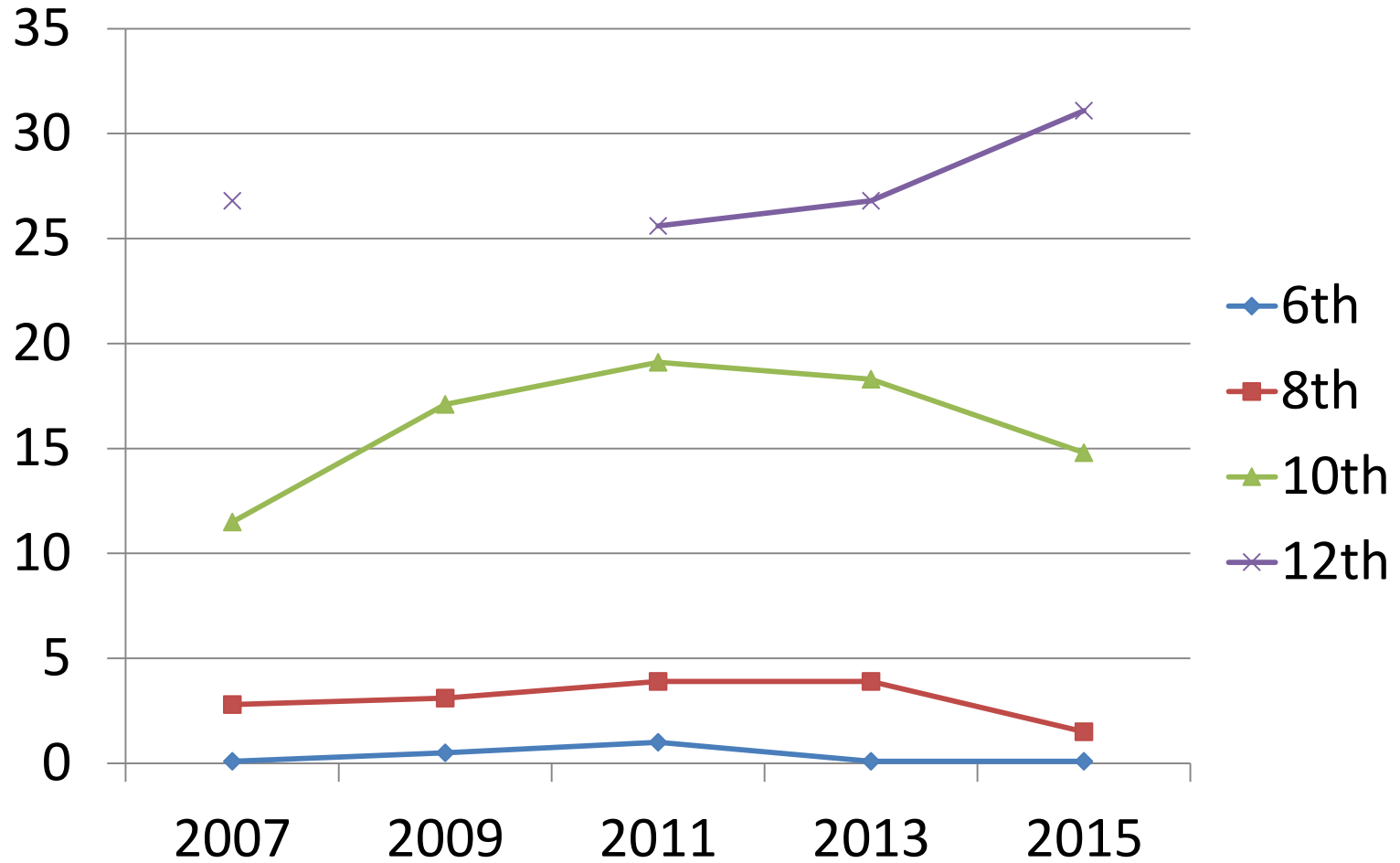
Percentages of students who report using alcohol at least once in the past 30 days

Past 30-Day use of Marijuana

	2007	2009	2011	2013	2015
6th	0.1	0.5	1	0.1	0.1
8th	2.8	3.1	3.9	3.9	1.5
10th	11.5	17.1	19.1	18.3	14.8
12th	26.8	no data	25.6	26.8	31.1

Percentages of students who reporting using marijuana at least once in the past 30 days

Past 30-Day use of Marijuana



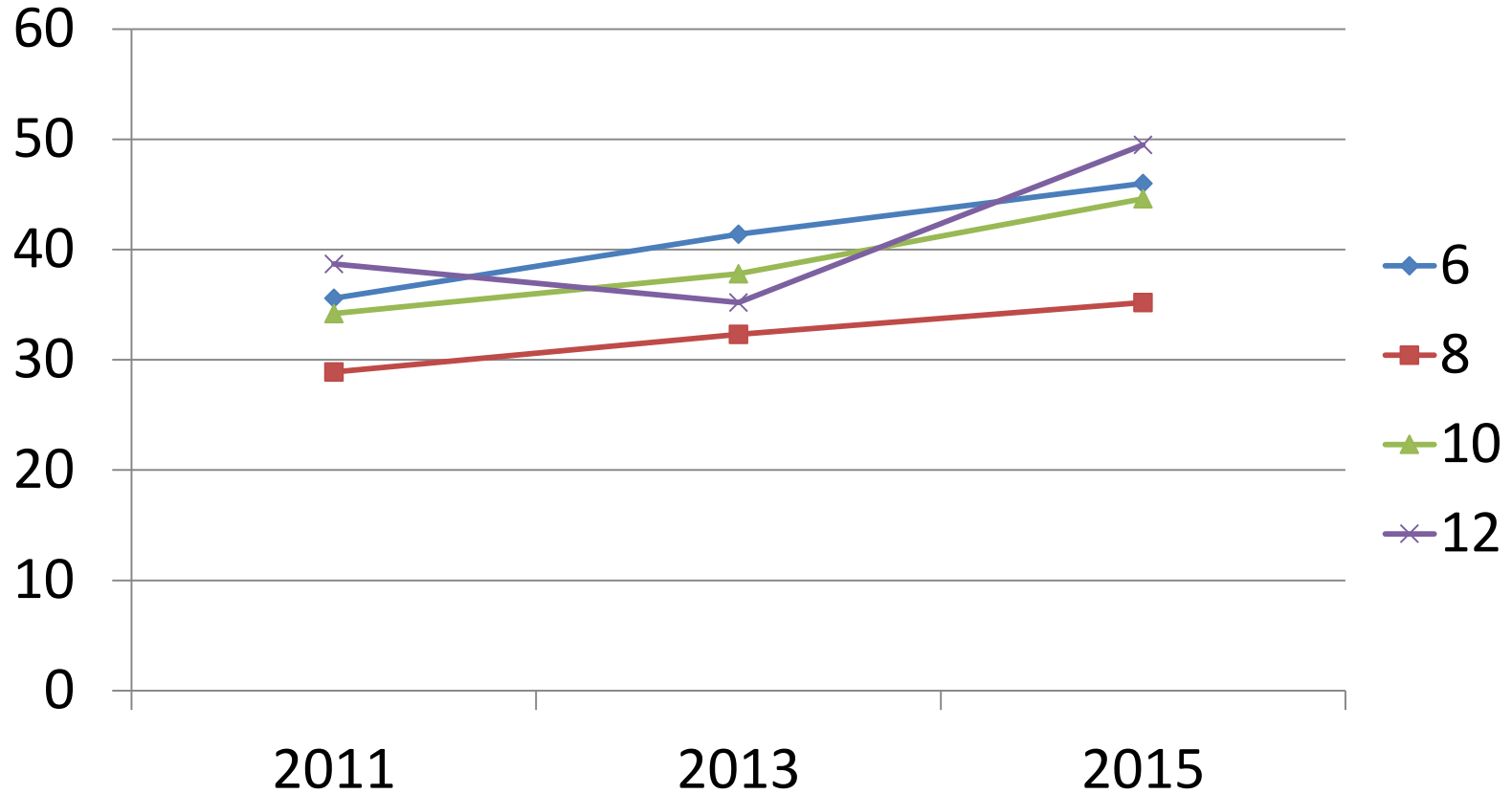
Percentages of students who reporting using marijuana at least once in the past 30 days

Risk Factor: Parental Attitudes Favorable to Anti-Social Behavior

	2011	2013	2015
6th	35.6	41.4	46
8th	28.9	32.3	35.2
10th	34.2	37.8	44.6
12th	38.7	35.2	49.5

Percentage of students deemed to be at risk due to this risk factor

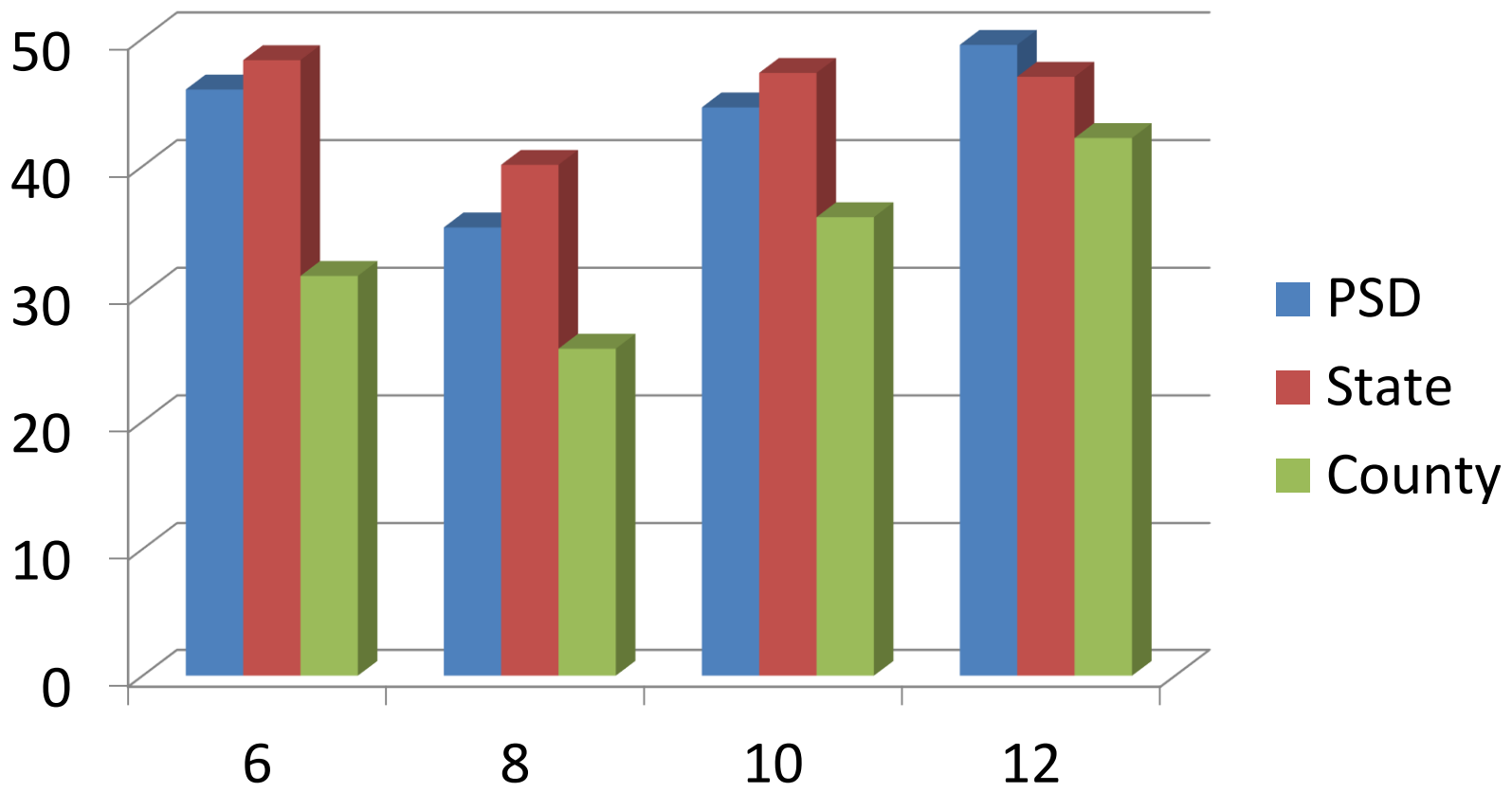
Favorable Attitudes Toward ASB (cont'd)



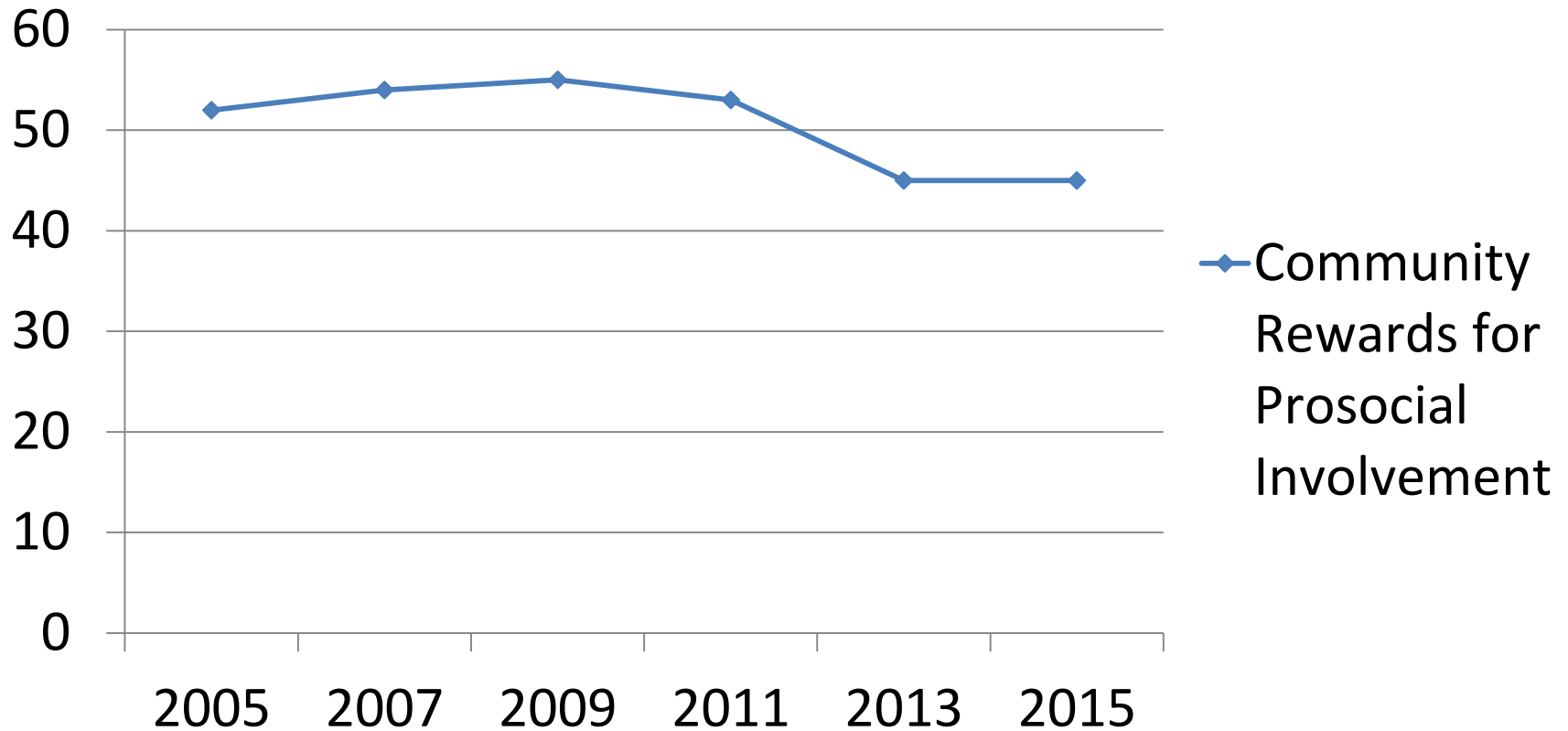
Percent of students deemed to be at risk because parents' attitudes favor anti-social behavior

Favorable Attitudes Toward ASB (cont'd)

PSD compared to State and County



Community Rewards for Pro-Social Involvement



Percent of students protected by being recognized by the community for positive choices

Recommendations

- Maintain a focus on parents and parenting to reduce favorable attitudes toward ASB
- Increase prevention education around real dangers of marijuana at the high school level and to their parents
- Continue with/expand PCA, as it bolsters rewards for pro-social behavior