



Charles Boehm

Welcome to 2019-2020

"Chapter 1-Welcome to Home B,
The Year of the 3 B's"

#BoehmPride



Boehm

Home B



CHARLES BOEHM

Boehm Pride

MIDDLE SCHOOL

P.R.I.D.E.

Prepared
Respectful
Involved
Determined
Excellent

Be successful by showing
your

P.R.I.D.E.

P - PREPARED

R - RESPECTFUL

I - INVOLVED

D - DETERMINED

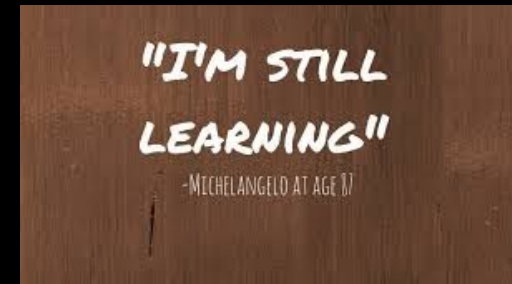
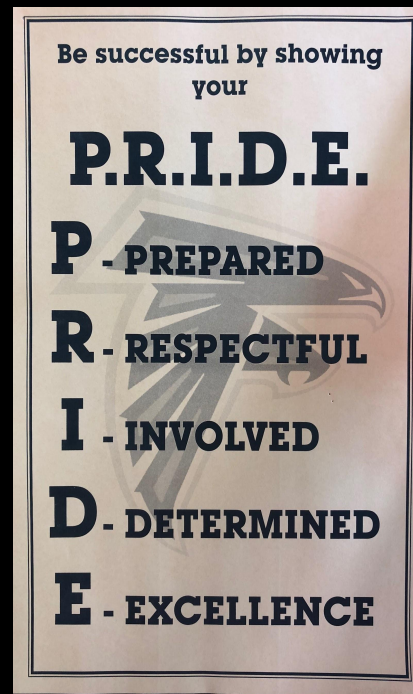
E - EXCELLENCE

What Drives Our School Story?

Building Relationships

Be Excellent

Breathe



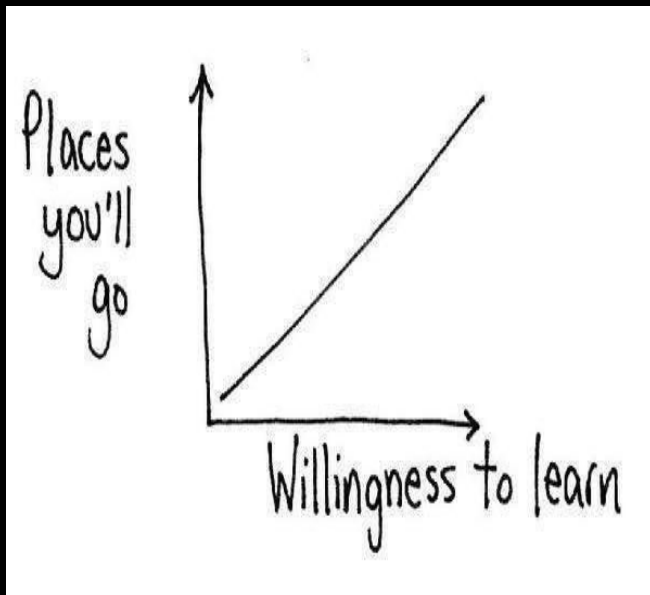
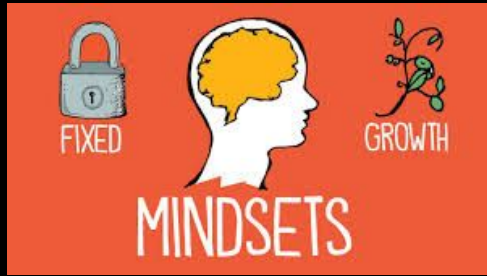
Building Relationships

IF YOU HAVE TO CHOOSE
BETWEEN BEING KIND AND
BEING RIGHT, CHOOSE
BEING KIND AND YOU'LL
ALWAYS BE RIGHT

Your tango



Be Excellent



DEVELOPING A GROWTH MINDSET

INSTEAD OF...	SAY THIS...
I'm not good at this	What am I missing?
I give up	I'll use a different strategy
It's good enough	Is this really my best work?
I can't make this any better	I can always improve
This is too hard	This may take some time
I made a mistake	Mistakes help me to learn
I just can't do this	I am going to train my brain
I'll never be that smart	I will learn how to do this
Plan A didn't work	There's always Plan B
My friend can do it	I will learn from them

PRIDE in BOEHM

Prepared

Respectful

Involved

Determine

Excellent

Expected Behaviors in School

- Walk throughout the building
- Keep food in the cafeteria
- Keep your hands to yourself
- Respectful language - no foul language - detention.
- No perfume or sprays in the hallways or classrooms.
- Students are responsible for their own belongings.



Expected Behaviors on Campus

- Students may never walk between schools unaccompanied. A staff member will accompany students to away games with a 4:00 dismissal.
- Bike Riders will now have access to a continuous path between William Penn and Boehm.
- Walkers coming from the Pennwood area please safely cross Roeloffs Road where there is a crossing guard. Always cross where there is access to a crossing guard.



Attendance

- Required by law to attend school
- Tardiness & Early Sign Out count against "perfect attendance"
- Written Excuse-within 3 days of returning to school
 - Drop off in the main office, parents can email as well.
- Sign In in office when late to school
- Leaving early-parent **MUST** come in to school for pick up
- Educational Trips - bring in note for Blue Card
- If attendance is low, doctor's note may be required
- Arrange for missed work
- All students must be accompanied by an adult when in the building before or after school.



Dress Code

- No hats, head coverings, bandanas, coats
- No spaghetti tank tops, belly shirts, low cut shirts
- All tops must have a minimum of 2" strap
- Shorts & skirts must be no shorter than mid-thigh length with no lettering on the back side. Rule of thumb: fingertip length
- No clothing with holes or rips of any kind
- No excessively revealing, or tight clothing
- No backless shoes, flip-flops, all sandals must have a strap (safety) "Securely fastened to the foot"
- All leggings, yoga pants & stretchy bottoms must be worn with a top that covers the entire upper torso and covers the buttocks completely.
- No clothing with inappropriate messages or advertisements
- No sleepwear of any kind
- Administrators make all final decisions - Students will be asked to change into gym clothes and return to class.

Drugs, Alcohol, Tobacco

- NONE! ABSOLUTELY NEVER!
- No prescription or over the counter meds
- Any prescription medication must be distributed by the nurse with specific guidelines
- No Drug Paraphernalia/Tobacco Products
- No Look alike Drugs
- No electronic cigarettes or smoking devices
- SUSPENSION - POLICE - FINES - POSSIBLE EXPULSION or ALTERNATIVE SCHOOL

Electronic Equipment



- No radios, personal electronics
- Electronic Devices phones must be turned off and not used during the school day.
 - First offense - confiscation
 - Second offense - confiscation & pick up by parents
 - Detentions and/or suspension for repeated offenses or use during the day at any time.
- Computer usage is strictly guided by a district-wide internet acceptable use agreement, which must be signed by all students and their parents/guardians.
- Internet violations will result in disciplinary action.

Bus Behavior



- Students must ride assigned bus only.
- Bus riding is a PRIVILEGE - disciplinary action will be taken in the event of misconduct
- Students involved in inappropriate bus or bus stop behavior may be removed from the bus:
 - Out of seat
 - -Fighting
 - Throwing objects
 - -Verbal abuse
 - Sitting improperly on the bus
 - -No food or drink
 - Vandalism

Endangering Acts

- Horseplay
- Fighting
- Weapons
- Threats
- Theft
- Laser pointers
- Safety Violations
- No skates, skate shoes, skateboards, scooters
- Vandalism and graffiti
- False Alarms, Bomb Threats, 911 Calls

School Discipline
and/or the
Police

Harassment pp.



- Verbal comments, drawings, notes, gestures
- Sexual harassment
- Bullying
- School related computer use ONLY
- Don't be a Victim! Seek help when necessary - Talk with your parents or staff
- Detention, Saturday Detention, Suspension, Police Involvement, Alternative Placement

3 Things



1. Build Relationships
2. Be Excellent
3. Breathe



Welcome to the 2019-2020 School Year!!

"Chapter 1-Welcome to Home B,
The Year of the 3 B's"

Let's Have an Awesome Year!

#BoehmPride

